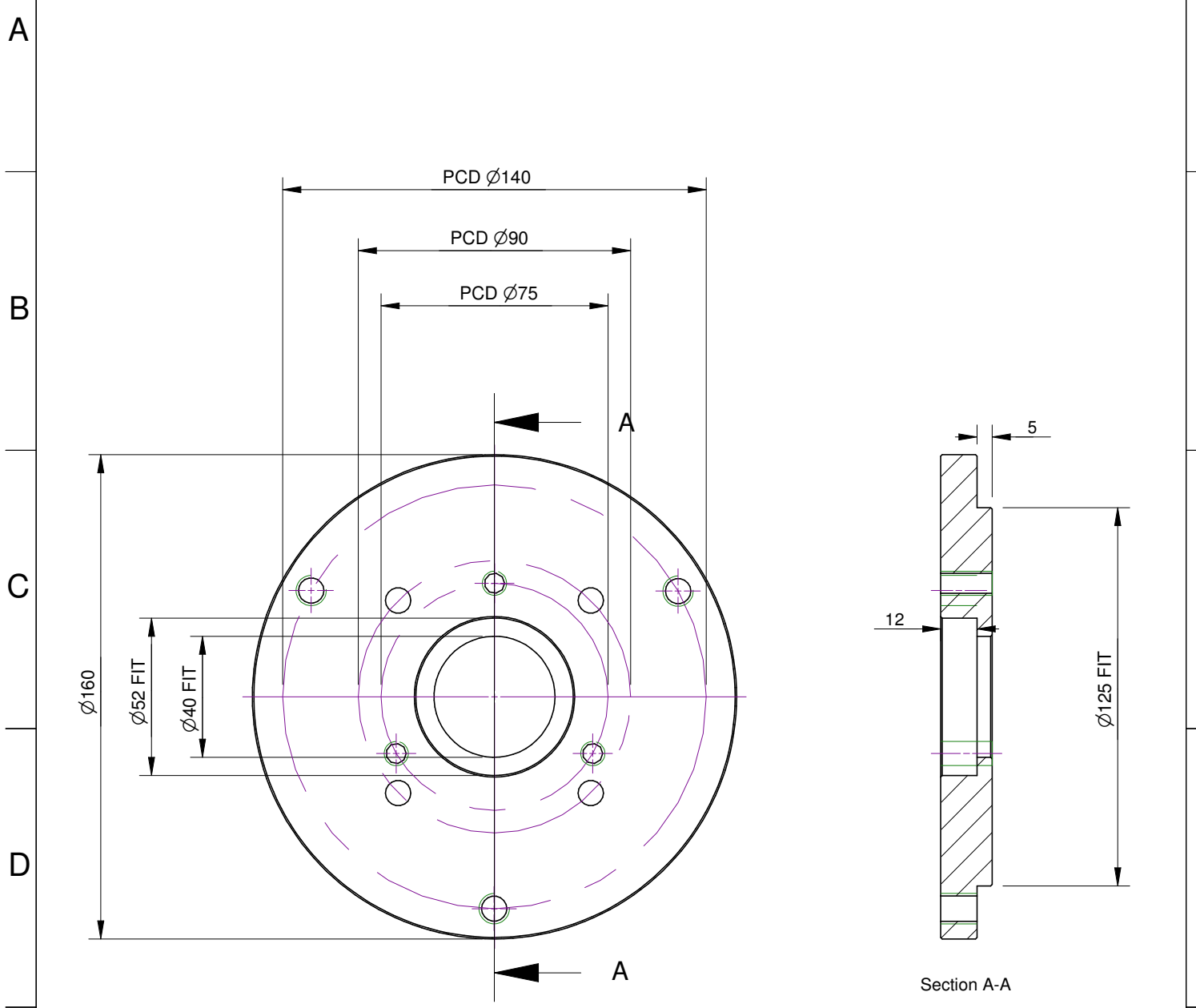
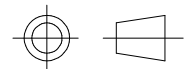


1	2	3	4
RevNo	Revision note	Date	Signature
			Checked



Recess  $\phi 52$  bored to fit lathe spindle nose  
 Boss  $\phi 125$  turned to fit 3-jaw chuck recess  
 Through hole  $\phi 40$  bored to fit 65-mm spigot for 4-jaw chuck

**CONFIDENTIAL**



F		Drawn by MFB	Date 12/03/2010	Dwg status PUBLISHED	Reviewed by - date MFB - 13/03/2010	Scale 1:2	
	From backplate casting (cast iron) Holes on PCD $\phi 75$ M8x1.25 THRU (3x) Holes on PCD $\phi 90$ and $\phi 140$ M10x1.5 THRU (7x)			<b>Backplate 160mm chucks</b>			Edition 01